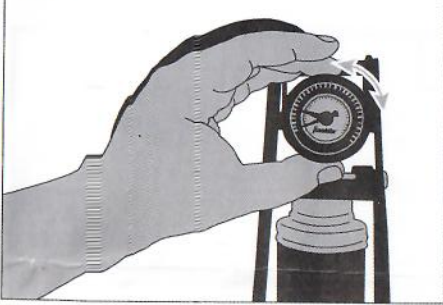


STEP 3



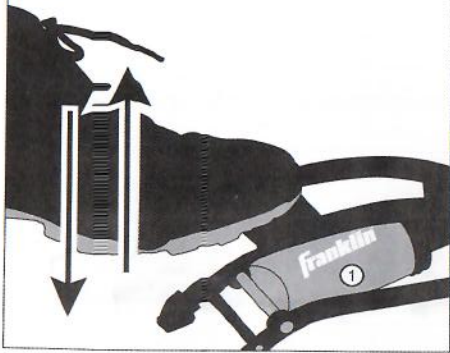
PARTS



NOTE

Adjust red needle on the outer face of the dial to your desired PSI.

STEP 4



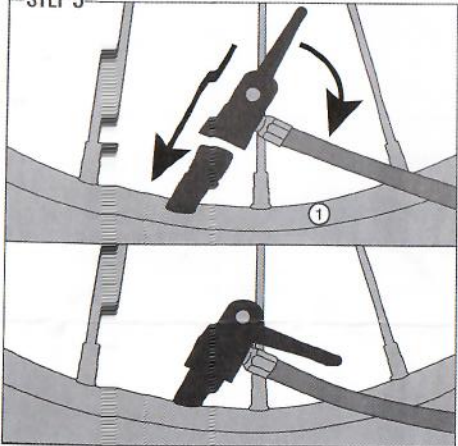
PARTS



NOTE

Pump until the needle inside the face of the dial is aligned with the red needle on the outside face of the dial.

STEP 5



PARTS



NOTE

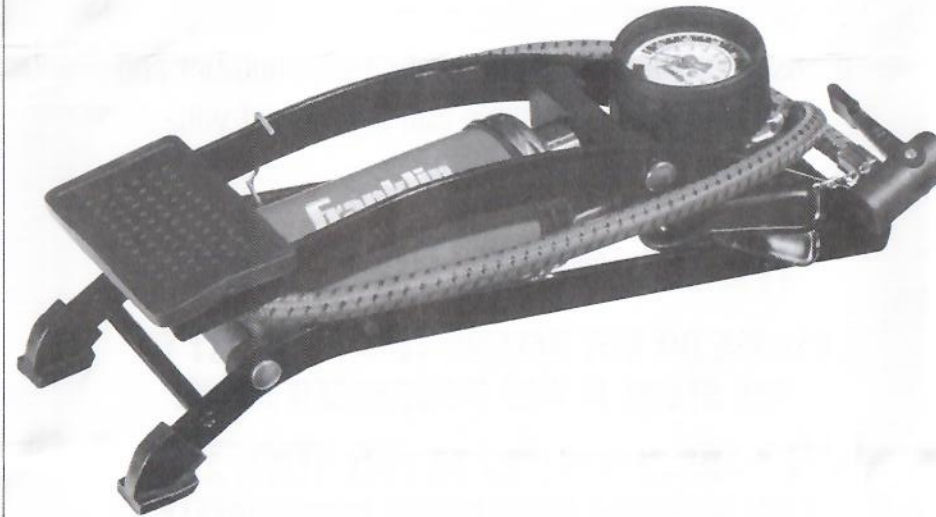
To inflate tires, pull lever to insert over valve stem, fold lever to secure in place.

To remove the inflator from the valve stem, lift the lever and pull out.

Franklin®

FOOT PUMP

ITEM NUMBER: **35509**



Franklin®

CUSTOMER SERVICE COMMITMENT

Thank you for purchasing this Franklin® product! In the event that the product you've purchased has missing or damaged parts, please contact us at:

parts@franklinsports.com

or

Visit our website at: www.franklinsports.com/35509

If possible, please include product part number and parts description so we can best assist you.

WE'RE HERE FOR YOU!

PLEASE DO NOT RETURN THIS PRODUCT TO THE STORE IT WAS PURCHASED FROM.

WE ARE COMMITTED TO FULFILLING ALL REPLACEMENT PART NEEDS IMMEDIATELY.



Thank you for your continued support, and welcome to the #FranklinFamily!

Franklin® ITEM#: **35509**

2

For replacement parts:
Visit: www.franklinsports.com/35509
Email: parts@franklinsports.com
Call: 1-800-225-8649

PARTS LIST :

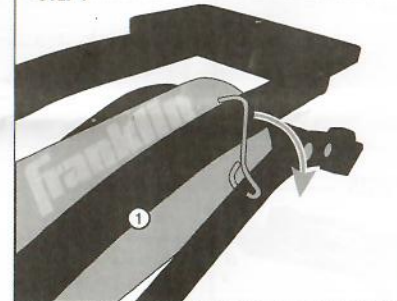
1  Foot Pump	QTY x1	2  Needle	QTY x1
--	-------------------------	---	-------------------------

ASSEMBLY INSTRUCTIONS

NOTE

Remove all the parts from the box and verify that you have all of the listed parts as shown on the parts list page.

STEP 1



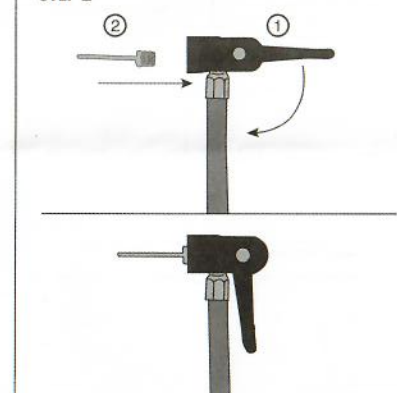
PARTS



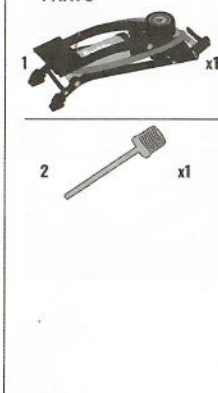
NOTE

Un-hook upper arm of Foot Pump (#1) from base.

STEP 2



PARTS



NOTE

Insert Needle (#2) into end of inflation hose, and close clamp to secure needle.

Franklin® ITEM#: **35509**

3

For replacement parts:
Visit: www.franklinsports.com/35509
Email: parts@franklinsports.com
Call: 1-800-225-8649